



PlaneTRack - complete ADS-B Airfield Receiving Systems 8,5", 10"- or 19"-rack inserts - display software available



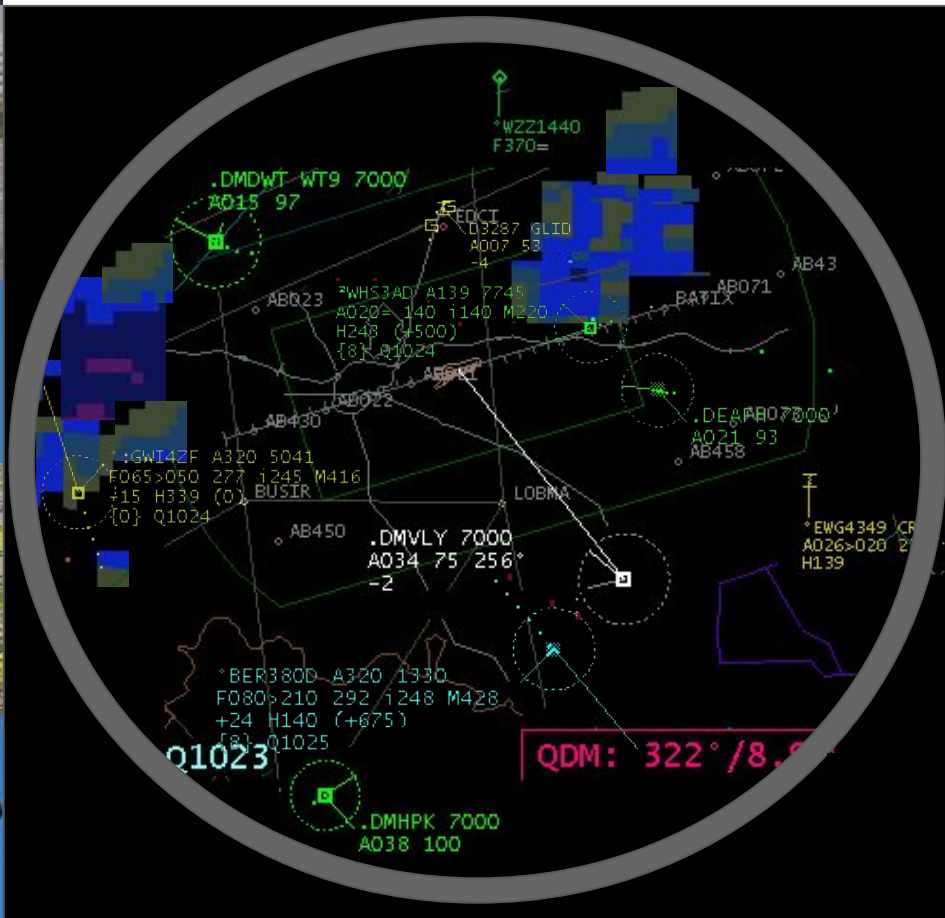
19" insert for standard racks



10" insert for Miniracks, also available as 8.5" desktop or under-desk device

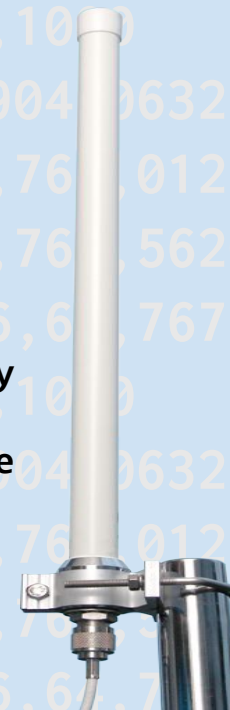


Display software for 2D and 3D presentation, multi-user capable over LAN or Internet, 2 windows, overlays for maps and weather



A growing number of VFR flights transmit their position, altitude, speed, vertical rate by DO-260/A/B ADS-B Transponder.

With our PlaneTRack-receiving systems airfield tower controllers will enjoy a quick overview about traffic in the vicinity, the traffic pattern or on the ground - of course, IFR flights in the adjacent controlled airspace, too.



Planevision
SYSTEMS



PlaneTrack ADS-B Airfield Receiving Systems are specified and tested by experienced tower controllers

PlaneTrack ADS-B Receiver for airfield use

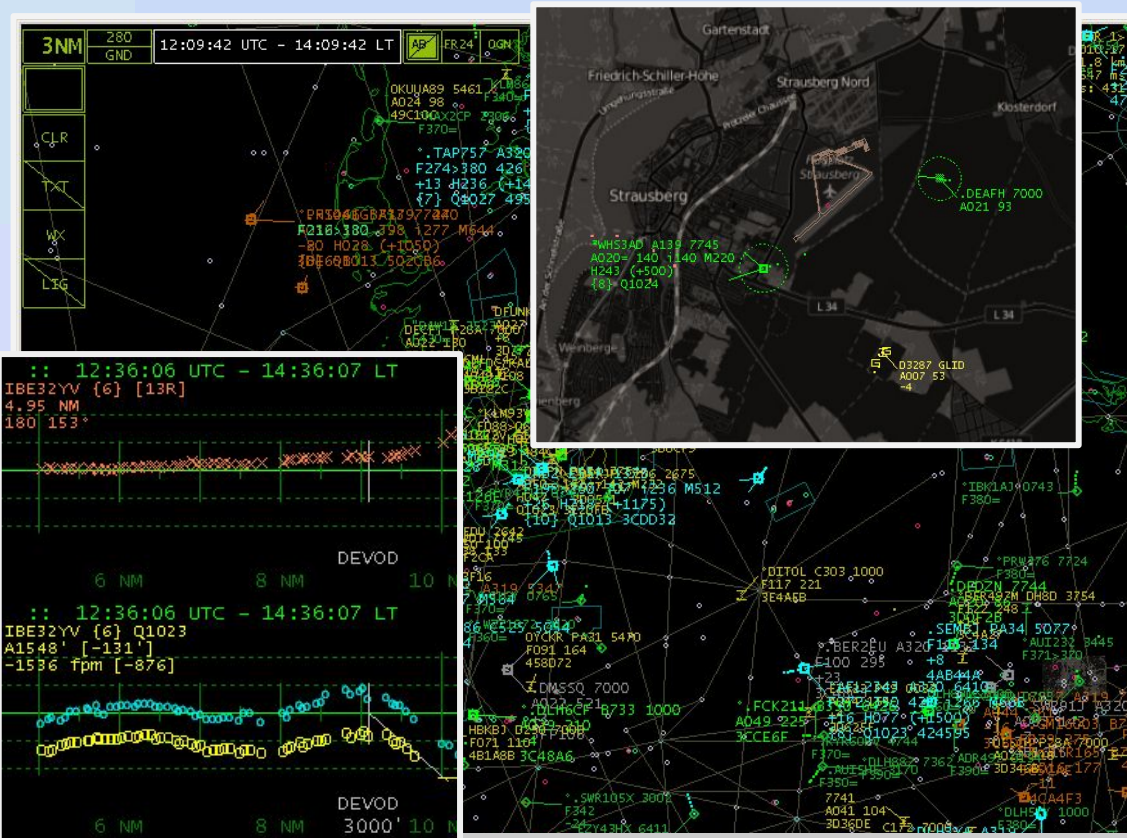
- professional ADS-B processor (no SDR) with surge protected ethernet interface
- narrow band RF frontend filter minimizes interference from close-in VHF-/UHF-transmitters or GSM
- integrated GPS receiver for high precision time stamps
- Antenna paths fully earthed, earth bolt on the case
- Enclosure and device fully compliant with CE, FCC and VDE regulations
- Enclosure options: 8.5" desktop (also under-desk), or 10", 19" rack insert, height 2U, integrated 115/230V power supply

Add-ons and Options

- 1090 MHz ADS-B/GPS antenna
- 1090 MHz ADS-B/GPS antenna for offshore use
- **FLARMtm** ground station receiver module
- Low loss antenna cable, e.g. -1.1 dB/10m
- Surge protectors for antenna lines
- 3D approach path monitoring display
- Individual display and map configurations

Display software proven with H24 tower operations

- specified and tested by experienced tower staff, practice oriented functions, filter and handling
- fully configurable display, map (e.g. OpenStreetMap) and weather can be overlaid
- Realtime position display together with altitude, speed and other available data; virtual flightstrip
- List display for non-ADS-B flights
- Hardware: external Windows PC (XP,7,8,10) by LAN or internal PC (HDMI connector)
- concurrent display on multiple PCs in LAN, up to 2 windows each - external access via internet possible



Planevision Systems GmbH - Grellkamp 6b - 22113 Oststeinbek - Germany
 Tel. +49-40-7131040 - Fax +49-40-6558 4005 - <http://planevision.systems>