



AllTRack

ADS-B* / AIS / DRID

Ground Station



Specification

*includes UAT for U.S.

Issued: 30/01/2026

Private and Confidential

Common Specification Data	
Power supply	<ul style="list-style-type: none"> • Data processing and format conversion • 12-36V or 18-72V DC input, max 60W, Amphenol plug 3102-10SL-4P • Ext. desktop PSU 90-264 VAC, 47-63 Hz, Amphenol jack 3106-10SL-4S
Common Data Processor	<ul style="list-style-type: none"> • Data processing and format conversion • Configuration manager
Enclosure	<ul style="list-style-type: none"> • Dimensions ca. 88.1 x 482.6 x 365mm • Aluminium 1.5/2.5/3 mm • Total weight: 6.8 kgs/14 lbs
Physical interfaces	<ul style="list-style-type: none"> • Ethernet RJ45 10/100 MBit/s, industrial router • USB Type A (maintenance) • 6 Control LEDs on front panel • Earth bolt on rear panel
Data interface	UDP, HTTP CSV, Binary, Asterix (subject to agreement)
Conformity	CE, IEC 61162-1; IEC 61993-2; EN 61000-3/-4/-6 EN 55022, EN 62368, EN 301489-1/-15; FCC part 15
Temperature rating	-20°C to +55°C (AIS -15°C to +55°C)

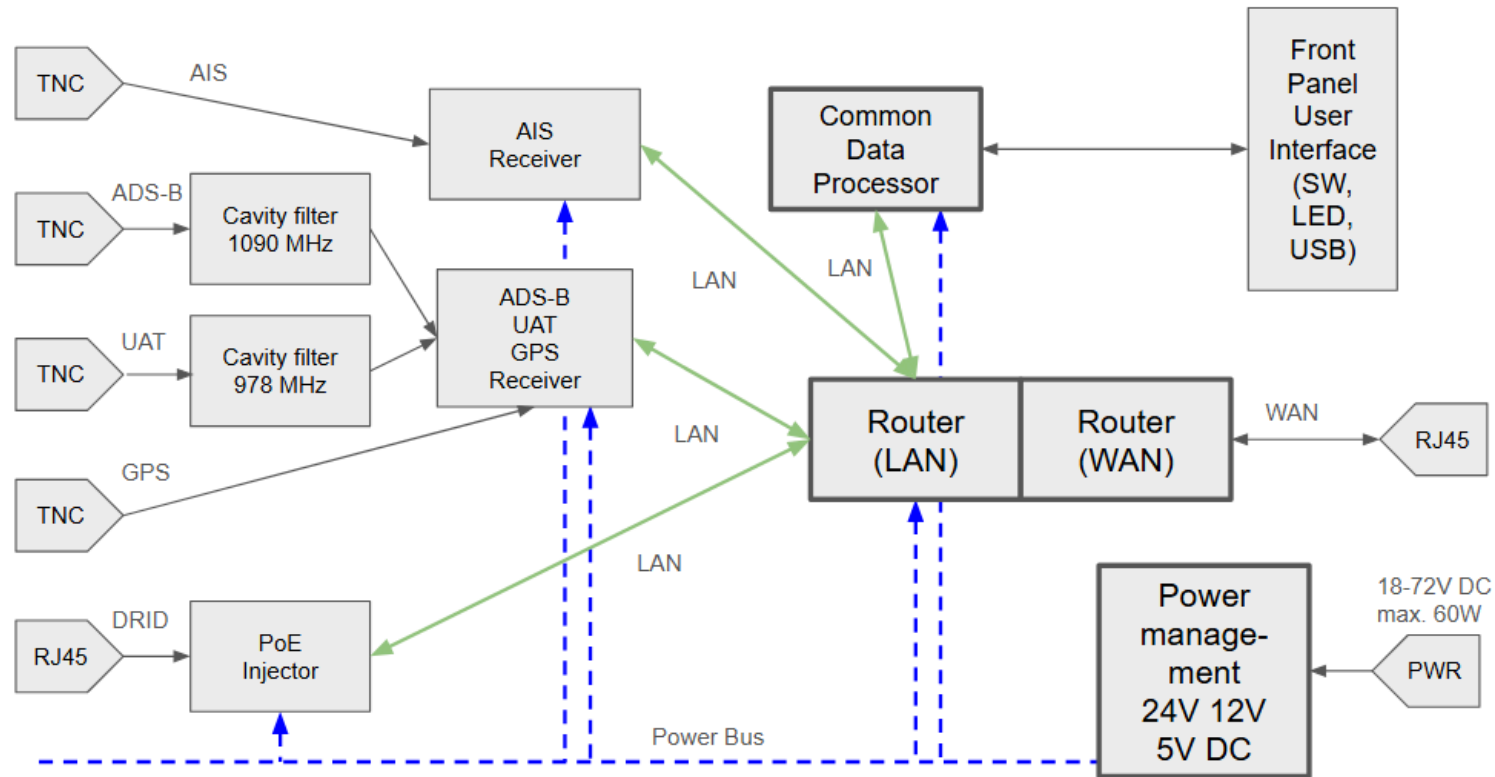
AIS Receiver Unit	
General	<ul style="list-style-type: none"> • Dual channel AIS receiver • Receives and decodes: AIS Class A and Class B transponders, AIS SARTs and Aids to Navigation • Configuration through Common Data Processor • Decoded data output through Common Data Processor • Passive device, no emission
RF tuner	161.975 (87B) + 162.025 (88B) MHz
RF input	<ul style="list-style-type: none"> • TNC(f) or N(f) conn., 50 Ohms, max. 0 dBm • Dual SAW filter RF stage
Internal Data Decoder	AIS data types: Name of Vessel; MMSI Number; Position; Speed (SOG); Course (COG); Type of Vessel; Call Sign; Heading; Rate of Turn; Navigational Status; Vessel Dimensions; Destination; private IEC messages on request
Sensitivity	better than -112dBm @ 20% MER
Conformity	CE, IEC 61162-1; IEC 61993-2; EN 61000-3/-4/-6 EN 55022, EN 62368, EN 301489-1/-15; FCC part 15

ADS-B Receiver Unit	
General	<ul style="list-style-type: none"> • Single channel ADS-B receiver • Receives and decodes: ADS-B, Mode-S, ACAS • Configuration through Common Data Processor • Decoded data output through Common Data Processor • Passive device, no emission
RF tuner	1090 MHz, option for U.S. 978 MHz
RF input	<ul style="list-style-type: none"> • TNC(f) or N(f) conn., 50 Ohms, max. +10 dBm • RF Cavity filter 0.1 MHz @ -0.5 dB, 4 MHz @ -3 dB, 35 MHz @ -30 dB • Dual SAW filter RF stage
Internal Data Decoder	FPGA high-speed decoder; ICAO Annex 10 Vol IV, DO260/A/B, DOC 9871, ED-129, ED-102/A; ADS-B, Mode-S, ACAS
Sensitivity	better than -93 dBm, dyn. range 75 dB
Conformity	CE, EN 61000-3/-4 EN 55022, EN 62368, EN 301489-1/-15; FCC part 15
GPS	<ul style="list-style-type: none"> • TNC(f) or N(f) conn., 50 Ohms, 5VDC supply

BROADCAST REMOTEID / DIRECT REMOTEID (DRID) Receiver Unit	
General	<ul style="list-style-type: none"> • Triple channel DRID receiver • Receives and decodes: DRID • Configuration through Common Data Processor • Decoded data output through Common Data Processor • Passive device, no emission • IP66 enclosure incl. mast clamp up to 66 mm diameter
RF tuner	<ul style="list-style-type: none"> • 2.4 GHz band (dual) • 5 + 5.8 GHz band
RF inputs	<ul style="list-style-type: none"> • TNC(f) or N(f) conn., 50 Ohms, max. +0 dBm
RF protocol	<ul style="list-style-type: none"> • Wifi Beacon, NaN; 2.4 GHz, 5 GHz, 5.8 GHz • Bluetooth BT4.0, BLE 2.4 GHz
Internal Data Decoder	<ul style="list-style-type: none"> • ASTM F3411-22a • (EU) 2019/945 prEN 4709-002 (ASD-STAN)
Sensitivity	better than -120dBm

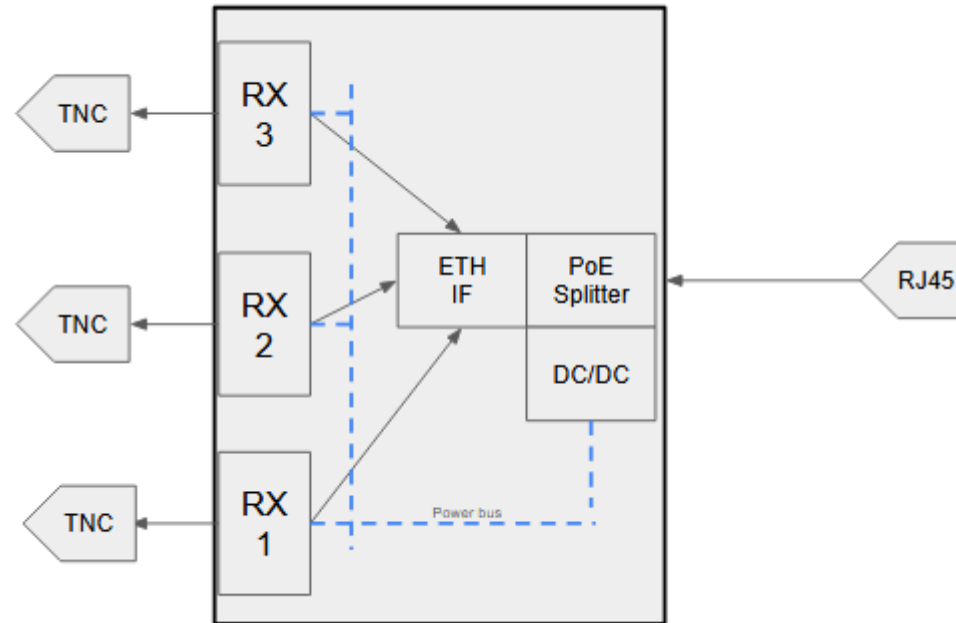
Conformity	CE, EN 61000-3/-4 EN 55022, EN 62368, EN 301489-1/-15; FCC part 15
Enclosure	<ul style="list-style-type: none">• Protection IP66• Dimensions 145 mm x 70 mm x 98 mm• Weight: ca. 1 kg / 2 lbs
Temperature rating	-40°C to +70°C

Schematic diagram - Indoor device



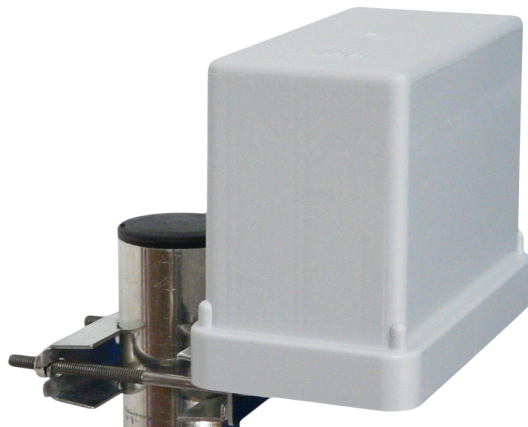
RF input alternative: N(f) connector
UAT: option for U.S. only
Input power option: 12 to 36VDC

Schematic diagram - Outdoor mast device



RF input alternative: N(f) connector

Sample views device set (indoor 19" 2U 365 mm and outdoor IP66)



Recommended antennas				
AIS*	162 MHz	Amphenol Procom CXL-2-1LW/h p/n 110000080	Height: 1.3 m 0 dBd integrated shroud -40°-+70°C	N
ADS-B*	1090 MHz	Amphenol Procom CXL-1090-1LW p/n 100000637	Height: 0.49 m 2.2 dBi integrated shroud -40°-+70°C	N
GPS*	1575 MHz	Amphenol Procom GPS 4 (5V) FME p/n 112000017	Height: 0.23 m >30 dB separate shroud (LW-SS-1) -50°-+70°C	FME + adapter or TNC = GPS4/5 V-TNC
DRID1/2*	2.4 GHz	Amphenol Procom CXL-2400-1LW p/n 100000864	Height: 0.53 m 8.2 dBi integrated shroud -30°-+70°C	N
DRID3*	5-5.8 GHz	Amphenol Procom CXL-5200-6LW p/n 100000296	Height: 0.33 m 2.2 dBi integrated shroud -30°-+70°C	N
* Marine qualified: full				

All data in this document are subject to error and change.

For further questions contact:

Planevision Systems GmbH

mail@planevision.de